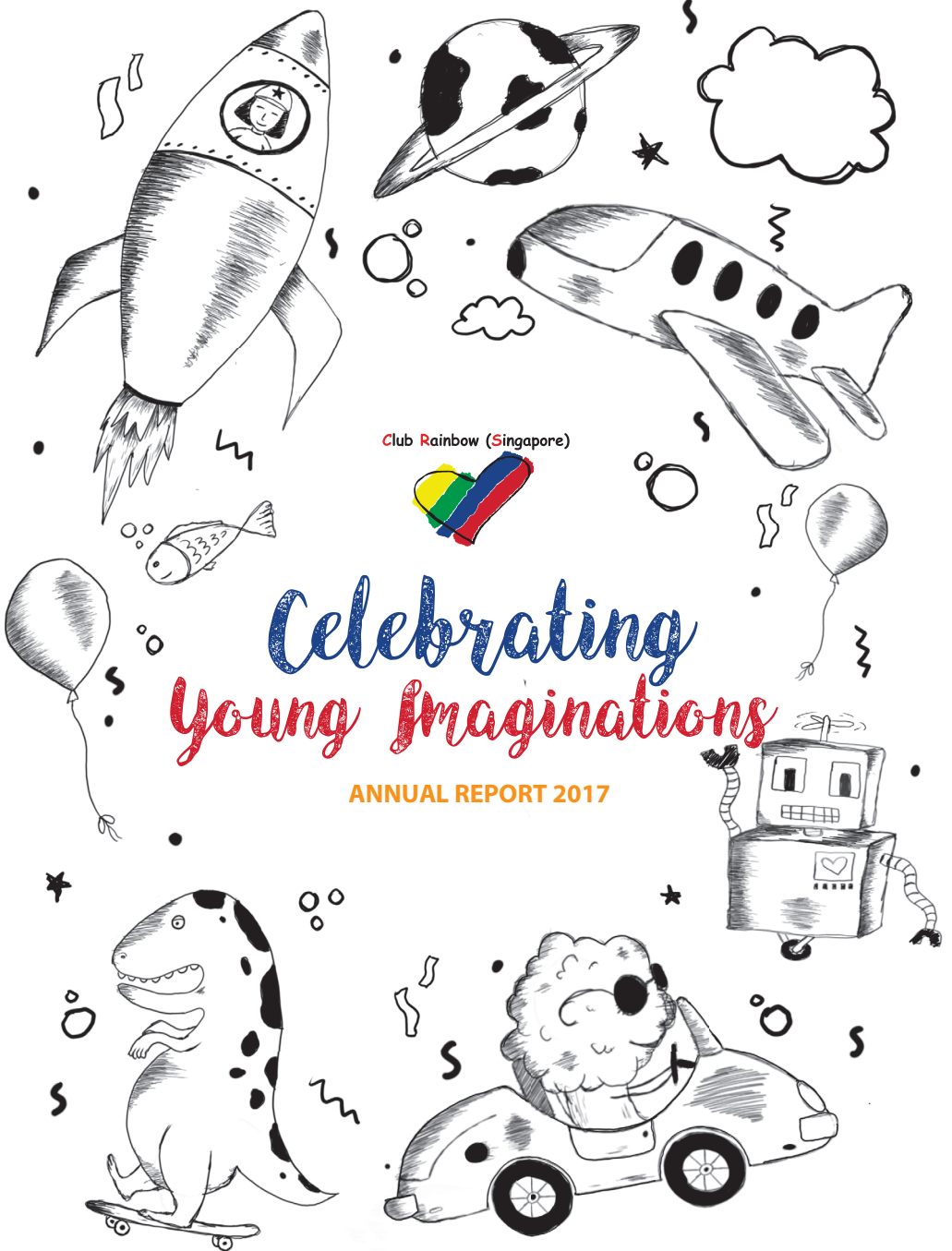


Club Rainbow (Singapore)



Celebrating Young Imaginations

ANNUAL REPORT 2017





MISSION

We support and empower children with chronic illnesses
& their families by providing compassionate relevant
services in their journey towards an enriching life.

VISION

To be the charity of choice that inspires hope and makes
a difference in the lives of children with chronic illnesses
and their families.

VALUES

Teamwork, Professionalism, Respect,
Integrity, Compassion, Excellence





Table Of Contents

About Club Rainbow (Singapore)	4	Social Support	26
Major illnesses affecting children in Club Rainbow (Singapore)	6	Strengthening Family Ties	26
President's Message	10	Talent Development	31
Management Council & Advisory Board	12	Community Engagement	34
Committees Of Club Rainbow (Singapore) & Conflict of Interest	13	Ad-Hoc Programmes	39
Highlights Of 2017	14	Financial Highlights	40
Our Services	16	Statement of Financial Position	41
Emotional Support	18	Statement Of Financial Activities	42
Financial Support	19		
Educational Assistance	20		
Therapy Services	22		
Transportation	24		
Hospital Services	24		



About Club Rainbow (Singapore)

Established in 1992, Club Rainbow (Singapore) is a non-profit organisation with a mission to support and empower children with chronic illnesses & their families by providing compassionate relevant services in their journey towards an enriching life.

Children in Club Rainbow (Singapore) range from new-borns to youths up to the age of 20. Many of them require frequent hospital visits for treatment, complicated therapy and long-term medication. Club Rainbow (Singapore) works closely with KK Women's & Children's Hospital (KKH), the National University Hospital (NUH) and the neonatal unit of Singapore General Hospital. The children are referred to Club Rainbow (Singapore) for critical follow-up support on the recommendation of doctors.

With the vision to be the charity of choice that inspires hope and makes a difference in the lives of children with chronic illnesses and their families, Club Rainbow (Singapore) adopts a holistic approach to help our beneficiaries in 5 core aspects:



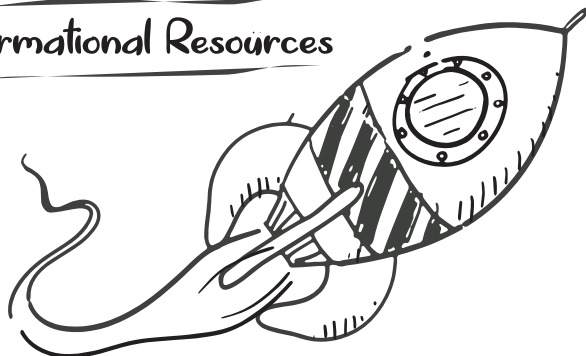
Emotional Support

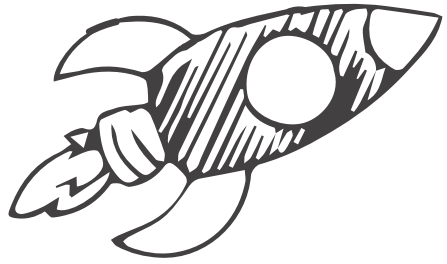
Financial Support

Educational Assistance

Social Integration

Informational Resources





We offer an array of free support services to our beneficiaries in each core aspect, some of which include home and hospital counselling as well as tuition services, regular social integration programmes and educational seminars.

Underscoring the work that we do are our core values:

Teamwork

Professionalism

Respect

Integrity

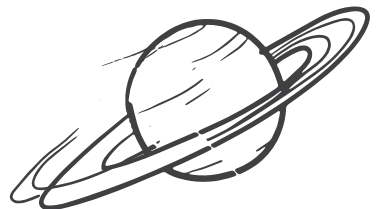
Compassion

Excellence



Club Rainbow (Singapore) is an independent charity that relies largely on corporate and public donations as well as government grants and funding to support our mission and sustain our work and daily operations.

Club Rainbow (Singapore) is a full member of the National Council of Social Services and we are registered under the Registry of Societies and Commissioner of Charities. We have also been given the Institution of a Public Character (IPC) status by the Ministry of Health. The IPC status enables Club Rainbow (Singapore) to provide tax-exemption receipts for monetary donations received.



Major illnesses affecting children in Club Rainbow (Singapore)

Blood Disorders

Blood disorders result from the defects in blood vessels or abnormalities in the blood itself. Common blood disorders serviced by Club Rainbow (Singapore) include Haemophilia (bleeding disorder), Thalassaemia Major (inheritable disorder where abnormal haemoglobin is produced, affecting oxygen transport around the body) and Anaemia (abnormally low red blood cell count).

Cardiovascular Disease

Congenital Heart Disease (CHD) is an abnormality in one's heart structure and great vessels since birth. It is the single most common major congenital abnormality. Most heart defects obstruct blood flow in the heart in an abnormal way. Many undergo corrective surgery and are able to survive into adulthood.

Gastroenterology

Gastroenterology relates to disorders of the gastrointestinal tract, liver and pancreas. Club Rainbow (Singapore) services a high number of beneficiaries with Biliary Atresia (BA). BA is a disease characterised by the absence of bile ducts, which normally drain bile from the liver to the intestines. Many have to undergo surgery (Kasai Procedure) which involves connecting a segment of intestine to the liver's bile ducts to re-establish the flow of bile away from the liver. A third may survive to early childhood but suffer from liver failure. Eventually a liver transplant will be the optimal but is costly and involves risk/complications.

Developmental Paediatrics

Developmental Paediatric covers a wide range of developmental disorders. These disorders may include cognitive or learning disabilities (i.e. Dyslexia), global developmental delay, Autism and Autism Spectrum Disorder (ASD), hearing or visual impairments and behavioural disorders. These children require long term intervention (i.e. speech and occupational therapies) to help them cope and integrate into the community.

Neurological Disorders

Neurological disorders affect the body's nervous systems. Some symptoms include paralysis, muscle weakness and poor coordination. Cerebral Palsy (movement disorders that appears in early childhood) and Muscular Atrophy/Dystrophy (progressive loss of mass/weakness muscle mass) are common diagnosis affecting mobility of a child. From the spectrum of disorders, one of the most severe is Duchenne Muscular Dystrophy (DMD). Some affected children never learn to walk, while some gradually get weaker and lose their ability to even stand or walk. Most children are either wheelchair-bound or bedridden. One of the most severe complications is when they become too weak to use their muscles to breathe adequately, eventually entering into respiratory failure. Without proper respiratory support, many at this stage will suffer from frequent chest infections and also succumb to the illness.

Very low birth weight infants

Very low birth weight infants born with weights (< 1500g) and premature, which is less than 37 weeks gestation is common in Singapore. Although there are cases of premature babies as early as 24 weeks of gestation being saved, more complications are faced due to insufficient development of their organ systems. Most babies will encounter various combinations of respiratory, cardiovascular, neurological, visual and nutritional problems.

Renal Disorders

Children as young as infants can develop kidney failure. When the kidneys fail to excrete unwanted toxic metabolites and excess water at a sufficient rate, both fluid and dangerous waste products accumulate in the body. When the kidneys completely cease to function, the child is in End Stage Renal Failure (ESRF) and requires lifelong dialysis, unless a kidney transplant can be arranged. Nephrotic Syndrome disease involves the kidneys in which there is leakage of a large amount of proteins from the kidneys into the urine. This results in a disruption in the distribution of the body's fluid balance and a child with Nephrotic Syndrome will appear swollen in the face, abdomen and the limbs due to fluid accumulation. Most will require long-term steroid medication and many will suffer from their side effects.

Rare Syndrome / Genetic Disorder

A genetic disorder is caused by abnormal expression of one or more genes in a person. There are a number of possible causes for genetic defects, ranging from mutation of a gene, abnormal chromosome number and other causes.

The vast majority of these disorders are quite rare and affect one in several thousands or millions of people. The group consists of genetic disorders such as Williams Syndrome, Angelman Syndrome, Prader-Willi Syndrome and Velocardiofacial Syndrome.

Others

Immunological Disorders

Immunological disorder is a dysfunction of the immune system. Frequent occurring disorders include: Systemic Lupus Erythematosus (SLE) which is an autoimmune disease where the body's immune system attacks healthy tissue. Affected areas can be the skin, joints, kidneys, brains and other organs. Juvenile Arthritis results in the inflammation of joints. Chronic Eczema is prolonged inflammation of the skin leading to rashes, dryness and blistering of the skin.

Metabolic disorders

Diabetes Mellitus (DM) is a metabolic disorder where the body has high blood sugar levels over a prolonged period. It is further segregated into Type 1 and Type 2. DM Type 1 results from the pancreas's failure to produce enough insulin and is more common in children. DM Type 2 is where cells fail to respond to insulin produced by the body. Insulin is the hormone necessary to control the body's sugar level. These children require long-term daily treatment consisting of multiple insulin injections, and frequent finger pricks to monitor their blood sugar level. However, despite treatment, both short and long term complications may still arise.

Respiratory Diseases

Asthma is a common long term inflammatory disease of the airways of the lungs. Symptoms include episodes of wheezing, coughing, chest tightness and shortness of breath. With medical advancement, most cases can be controlled with medication.

Illness Groups in Club Rainbow (Singapore)

2017

2016

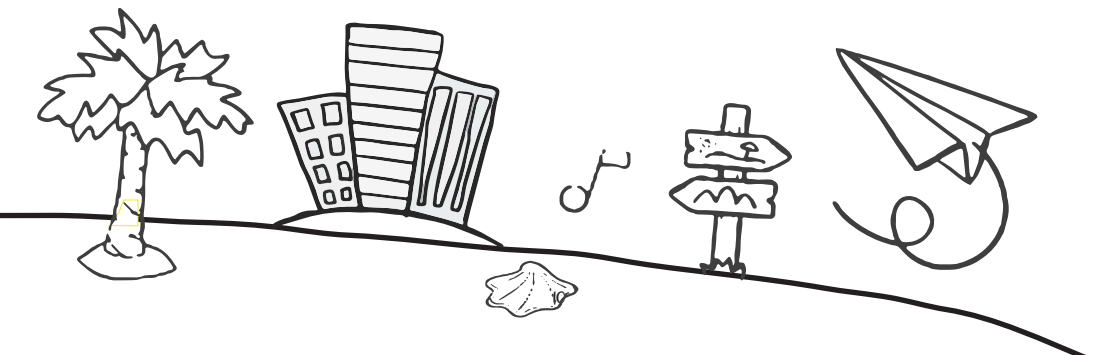
Blood Disorders	72	68
Cardiovascular Disease	61	58
Gastroenterology	72	75
Developmental Paediatrics	161	
Neurological Disorders	262	260
Very Low Birth Weight (VLBW)	114	102
Rare Syndrome and Genetic Disorder (RGN)	159	135
Respiratory Diseases	49	45
Renal Disorders	59	61
Immunological Disorders	38	37
Metabolic Disorders	18	18
Grand total number of beneficiaries	1,065	859



President's Message

2017 marked another milestone in the history of Club Rainbow (Singapore). Our 25th Anniversary provided a great story to tell about how our ground-up initiative of helping children with chronic illnesses and their families has evolved over the years. With generous support from our partners, we have grown to become a charity with a comprehensive variety of professionally-run offerings for over 1,000 beneficiaries. As a demonstration of our ongoing improvement in quality assurance and good controls, we received a renewal of IPC status for another 3 years – an honor of recognition for high standards in regulatory compliance and governance.

This year it was all about growth and consolidation. We had the benefit of piloting several Client Services programs last year. In 2017, we scaled up our Client Services offerings in Transportation, Tuition and Therapy Services (Occupational, Physio, Speech, Art & Play, etc.) in a major fashion resulting in our ability to help 60% more children than the year before and doubling the number of sessions delivered. In the area of Social Work, we were able to increase our touch time with the beneficiaries by 70% and increase our assistance for our beneficiaries and their families. On the program development front, we had focused on refining and consolidating the programs to create greater impact in areas such as social bonding, music and art, etc. These areas will continue to evolve and our aim is to continue to provide positive impact through these initiatives.





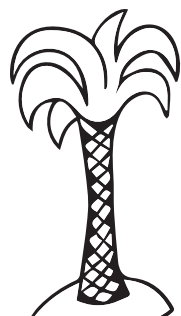
On top of growing and consolidating, we have launched some new elements for the children such as Critical Years Tuition (for mainstream students) to provide appropriate help early by working with professional education partners, Befriending Service to offer yet another pillar of support for the families and Bridge Program to provide an early start for our older children by equipping them with functional skills to be more independent before graduation from the charity. With each year, we hope to start more relevant programs to stay current to the changing needs of our children and their families.

In our efforts to raise awareness and funds to support our good work, we have continued to partner with almost 200 commercial organizations for events and programs. Our iconic midnight round-the-island cycling event, Ride For Rainbows had seen over 700 riders cycling through the roads of Singapore to show support to our children in their long, dark and tough journeys.

We had a fruitful 2017. We were able to provide relevant compassionate services to over 1,000 children affected by chronic illnesses and their families. None of this can be done without the kind support of all the stakeholders ranging from volunteers, donors, sponsors, partners and the staff team members. With the community of supporters for our mission and vision, I am looking forward to enhance our ability in inspiring hope and making a difference, and enrich the life journey of the children under our care.

Sincerely yours,

Dr Sashikumar Ganapathy





Management Council 2017

President	Dr Sashikumar Ganapathy
Vice President	Mr Eric Teo Hong Kiat
Honorary Treasurer	Mr Allen Zheng Ren Hao
Honorary Secretary	Ms Lim Huay Ling
Fundraising & Marketing Director	Mr Chow Shang Wei (<i>Up to 31 December 2017</i>)
Governance & Compliance Director	Ms Neo Ker Ting
Medical Director	Dr Chew So-Phia
Medical Director	Dr Junaidah Badron
Programme Director	Ms Jacinta Kong Sok Yee
Programme Director	Ms Karen Tan Sok Hong
Education Director	Mr Ramanan Ramadoss
Member	Mr Clement Goh Eng Khong

Advisory Board 2017

Professor Prabhakaran Krishnan
Associate Professor Quek Swee Chye
Dr Low Poh Sim
Professor Phua Kong Boo
Dr June Lou
Dr Chan Mei-Yoke
Dr Rosaleen Ow
Dr Jazmyn Chelliah
Professor Ho Lai Yun
Mr Gregory Vijayendran



Committees Of Club Rainbow (Singapore)

To assist the Management Council in covering key areas of management and improving its oversight over management and accountability to stakeholders, the Management Council has established the following 2 committees:

INVESTMENT COMMITTEE

The Investment Committee recommends the investment guidelines and ensures that the investment objectives of Club Rainbow (Singapore) are met in accordance with these guidelines. The Committee advises and, monitors the performance and the risk-return profile of the underlying investments for the sole interest of the beneficiaries. It also assesses the performance of the external investment manager, reports to the Council on the investment performance of the managed funds and provides guidance on all matters relating to investment administration.

The Committee currently has 3 members, who have many years of investment experience among them, namely:

Mr Adrian Foo (Chairman)

Mr Eric Khaw

Mr Amit Malik

AUDIT COMMITTEE

The Audit Committee reviews the efficiency and effectiveness of Club Rainbow (Singapore)'s material internal controls, has oversight over the risk management process and adequacy of corporate governance, serves as an independent and objective party to review the integrity of the financial information, monitors the tone as well as oversees Club Rainbow (Singapore)'s ethical environment and acts as a liaison between the Council and external auditors.

The Committee consists of 3 members who have extensive financial experience, namely:

Mr Albert Tan (Chairman)

Mr Peter Scully

Ms Karen Kok

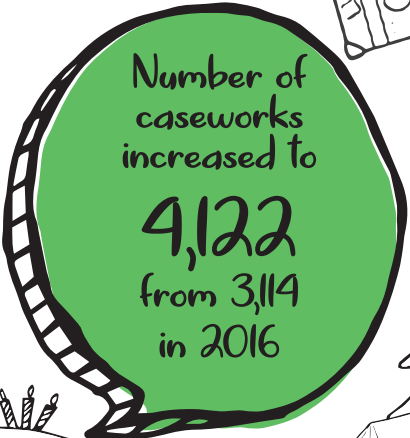
Conflict Of Interest

All Council members, Committees' members and staff of Club Rainbow (Singapore) are required to read and understand the conflict of interest policy in place and make full disclosure of interests, relationships and holdings that could potentially result in a conflict of interest. The members and staff have fully complied with the conflict of interest policy.

Highlights Of 2017




1065
Beneficiaries
served



Number of
caseworks
increased to
4,122
from 3,114
in 2016



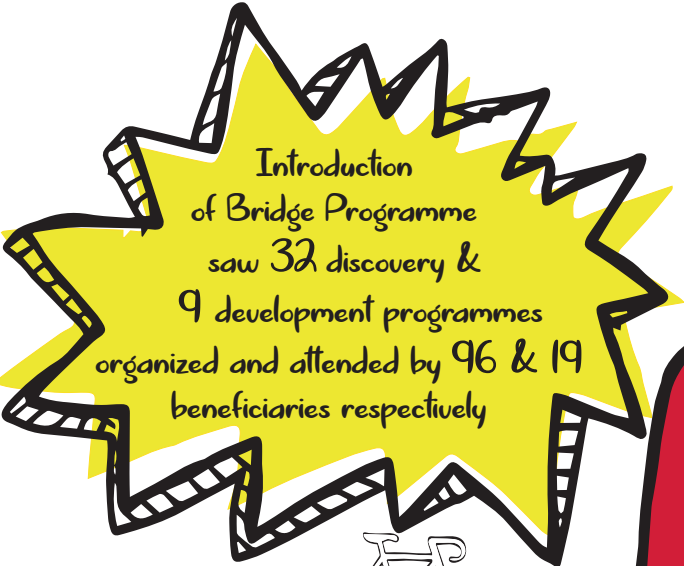
We were
25 in 2017!
About
\$155,000
was raised at a
gala dinner "Shine
in your own way"



Camp Rainbow has a new venue this
year! We went to Cherrylofts at Pasir
Ris and recorded the highest number of
81 beneficiaries, supported by
220 volunteers



2,972 hospital centre
sessions of art, play, parties
and other activities were held,
up from 1,136 sessions in 2016



Introduction
of Bridge Programme
saw 32 discovery &
9 development programmes
organized and attended by 96 & 19
beneficiaries respectively



Ride for Rainbows
raised almost
\$650,000
with 707 riders participating



Provided
1,719 sessions
of core therapy
services for
144 beneficiaries,
compared to 486
sessions for 45
beneficiaries in 2016

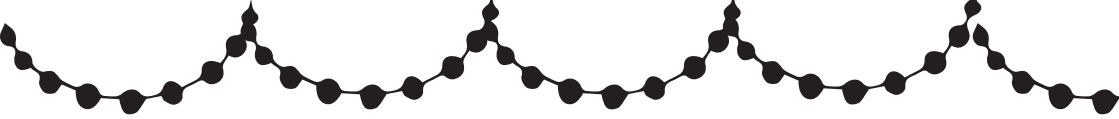


Celebrating
the creativity of
our children, Dreamseeds Arts
Festival brought together 115
beneficiaries and 778 other
participants, compared with 79
beneficiaries and 293 others
in 2016

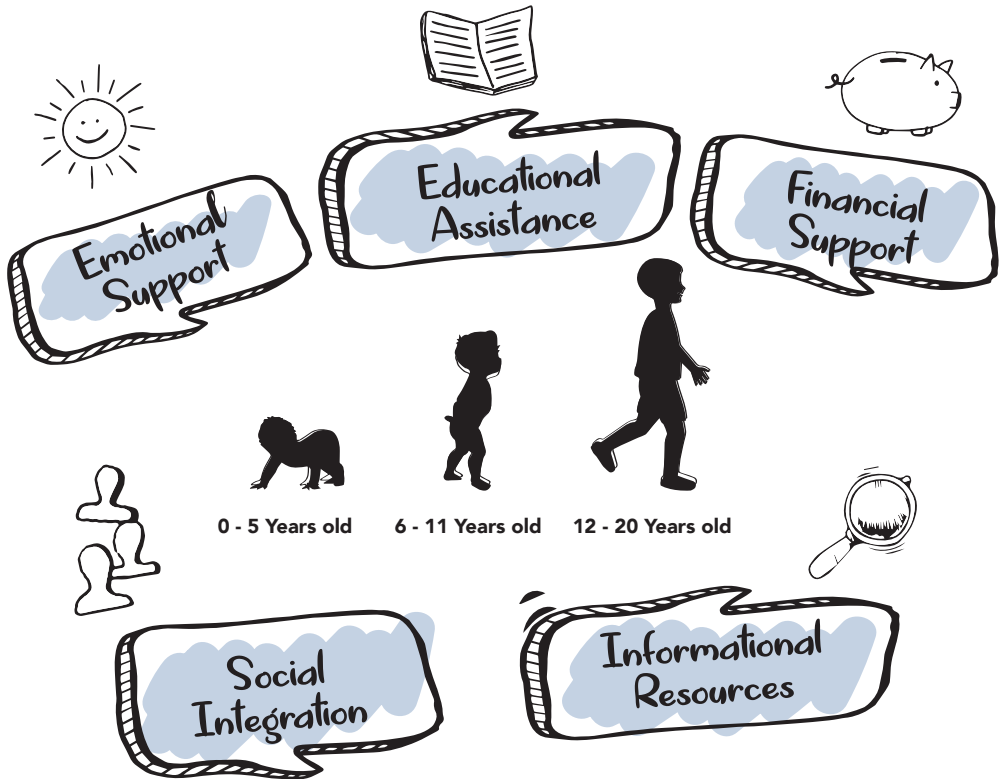


201 beneficiaries
were awarded
bursaries and 89
educational awards
were given out





Journeying with our beneficiaries and their families



★ Our Services ★

Many of our services are geared towards helping the entire family in a holistic way as every family member is likely to be impacted by the child's illness in one form or another. By providing compassionate relevant services, we aim to give our beneficiaries a better quality of life and hope for the future.

Beneficiaries Served

	2017	2016
Active beneficiaries as of 31 December	1,020	816
Graduates	37	31
Demised	8	12
Total beneficiaries (Jan – Dec)	1,065	859

Casework

	2017	2016
Casework / Counselling (Office)	1,252	1,505
Home Visits	599	421
Hospital Visits	370	452
Follow-up contacts	1,901	736
Total	4,122	3,114

Type of Support rendered and Sessions (!)

	2017	2016
Financial Support	30%	32%
Psychosocial Support	43%	42%
Other areas of support (For eg. Education, Employment & Housing)	27%	26%

Emotional Support



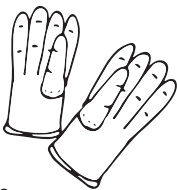
We provide emotional support through individual counselling, group work and support group. Some of the children prefer to learn in a group and we have gathered positive feedbacks that group work allows the children to communicate with each other and understands what they are going through. One example is the Social Skills Training 4-days workshop held during the June Holidays in 2017.

WAH! Project was initiated in April 2017. WAH! denotes We Are Here! The intention of this project is to shout out to all our children with chronic illnesses and their families that Club Rainbow (Singapore) is here to offer a helping hand and friendship so as to reduce social isolation for the child, parents and the entire family.



In the later part of 2017, we created a WhatsApp and Facebook social media platform – Club Rainbow Autism Support Group, a closed group for parents of child(ren) with Autism Spectra Disorder. Our aim is to encourage parents' interaction and support among themselves. We also aim to work towards having the children to be independent, able to self-help, interact and communicate via the fun-filled programmes and support.

Financial Support



Club Rainbow (Singapore) provides short-term and interim financial assistance to the needy families via monetary and/or in-kind support. We are aiming to help the families towards resilience and self-reliance in managing their finances before the child graduates from Club Rainbow (Singapore).

One example of in-kind assistance is via Mediacorp programme, RenovAID Season 6. This is a programme featuring home owners who need help and assistance with their home renovation.



Financial Assistance Scheme	2017	2016
No. of families assisted	266	352
No. of beneficiaries assisted for therapy(s)	74	28

Educational Assistance



Bursary

Club Rainbow (Singapore) has been providing yearly bursary for our children with chronic illnesses. It helps the children from low income families to manage any additional education related costs, such as school stationeries, shoes, spectacles, story and assessment books, etc.



201
beneficiaries awarded,

with \$102,500 paid out, compared with 191
beneficiaries in 2016, with \$98,800 paid out



Education Awards

Education Awards Categories

Special Needs	38%
Mainstream	62%

Education Awards Recipients Mainstream Academic Level

Primary	17
Secondary	19
Tertiary & JC	19

89 beneficiaries
qualified for the
Education awards, up
from 63 in 2016.



Club Rainbow Education Awards 2017 recipients, with Dr. Sashikumar Ganapathy, President (photo on the left) and Mr Ramanan Ramadoss, Education Director (photo on the right)



Tuition

In the area of tuition, there was a 60% increase in the number of beneficiaries served. We introduced two new education support services - 1) tuition for beneficiaries with special learning needs by volunteer tutors; 2) professional tuition service for beneficiaries sitting national examination such as PSLE and GCE examinations. There was also a jump of 40% in the number of beneficiaries who qualified for the Education Awards, Mainstream and Special Needs.

Tuition By Levels (Mainstream Track)

	Beneficiaries	Siblings
Preschool	4	6
Primary	46	30
Secondary	33	12
Tertiary & JC	1	1



Beneficiary Usyair with volunteer tutor Anusha

"Usyair has progressed well in all his subjects. He passed English. He scored double digits in Maths/Science even though he didn't pass. Safiyyah did well in both subjects." ---

Mdm Halimatus Saddiah, parent of beneficiary Muhammed U'Syair Bin Mohamad Irwan. Club Rainbow also provides tuition for his sister Safiyyah U'Syairah Binte Mohamad Irwan.

PSLE English Workshop conducted by sponsor All About EO for our beneficiaries free-of-charge.



Therapy Services

2017 saw a significant growth in the overall demand for our services as we expanded our capacity and capability to provide these services to more beneficiaries. Notably, core therapy services, which comprise, occupational therapy, physiotherapy and speech therapy, experienced the largest growth in demand due to a big jump in referrals from the hospitals. Complementary therapy, comprising art therapy, play therapy and swimming, also received more applications from the families as parents saw the benefits these services have on the children.

Core Therapy: Occupational Therapy, Physiotherapy and Speech Therapy

Core Therapy Services

Beneficiaries Age Profile

0-5	64
6-11	53
12-16	18
17-21	9

Provided **1719** sessions of core therapy services for 144 beneficiaries, up from 486 sessions for 45 beneficiaries in 2016

Core Therapy Services Beneficiaries Illness Group Profile

Blood Disorders	1
Cardiovascular Disease	4
Developmental Paediatrics	62
Neurological Disorders	46
Rare syndromes & Genetic Disorder	23
Renal Disorders	1
Very low birth weight infants	7



WeiChen receiving home-based speech therapy from Club Rainbow therapist, Evelyn.

"Evelyn [Club Rainbow's speech therapist] started Wei Chen's speech therapy from May 2017 onwards. Initially we thought it might be too early for him because he could not make any sound that time. But after few sessions, we realized we were wrong as the speech is really not from speech. We started from attention training first, slowly move to turn-taking. Now he can make some vowel sound. We wish next year Club Rainbow can still provide speech therapy service. It is very difficult to book speech therapy in the hospital and as Wei Chen still does not attend the Early Intervention Programme for Infants and Children, we are worried we will miss out the best time to teach him to talk if we don't have people to guide us. Thanks."

Wei Xiaowei, parent of beneficiary Zhang WeiChen.

Complementary Therapy Services: Art Therapy, Play Therapy, Swimming

Core Therapy Services Beneficiaries Age Profile

4-11	45
12-16	10
17-21	5

Provided
859 sessions
of complementary therapy
services for 60 beneficiaries,
up from 255 sessions for 20
beneficiaries in 2016

"Since he came for play therapy, I can see a lot of changes. Previously he did not know how to answer questions and always kept quiet. But now he can answer me eg. He can say things like 'I am eating rice; I am playing toys'" ---

Mdm Raihana Binte Kamarudin, parent of beneficiary
Muhammad Al Ramadhan Bin Abdullah.

Complementary Therapy Services Beneficiaries Illness Group Profile

Blood Disorders	1
Cardiovascular Disease	6
Developmental Paediatrics	22
Immunological Disorders	1
Neurological Disorders	18
Rare syndromes & Genetic Disorder	4
Respiratory Diseases	2
Very low birth weight infants	6

Transportation



The transportation service which is provided to beneficiaries who have disabilities to travel to the hospitals for appointments, served 40% more beneficiaries in 2017 than 2016.



Made **2587 trips** to ferry 100 beneficiaries for hospital appointments and Club Rainbow therapy services and events, up from 2518 trips for 70 beneficiaries in 2016



"I feel relieved knowing that my son's hospital visits are taken care of by Club Rainbow transport providers. Always a pleasure to see Moses, Sanker and Uncle John taking turns to pick us up. Moses always makes an effort to provide great service. Thank you to them." ----

Shanti d/o Sivasamy, parent of beneficiary Bhramarueban Premakumar



Hospital Services

The Rainbow Care & Resource Centres at KKH and NUH served more beneficiaries who were admitted to the hospitals or were there for appointments. We organized a variety of services, such as art and play sessions, school holidays programmes, Children's Day and Christmas parties, craft workshops for caregivers and educational talks, to provide a positive and uplifting experience at the hospital for the beneficiaries and their families.

2017

2016

Centre sessions: Art, play, parties and other activities

2,972 sessions

1,136 sessions

Ward sessions: Art and Play

1,269 sessions

774 sessions



Sewing Workshop for caregivers at KKH conducted and sponsored by volunteer instructor Jasene Ong.



2017 Children's Day party for beneficiaries at KKH sponsored by Logicalis Singapore Pte Ltd.



Beneficiaries and caregivers at the Open Art Studio at KKH.



2017 Christmas Party for families at NUH sponsored and organized by Pilz South East Asia Pte Ltd.



Social Support

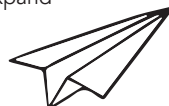


Social integration programmes are a medium to incorporate balance in the physical and emotional aspects of a child's life. These aim to provide equitable opportunities to enable and empower our children and families through developing skills, building self-esteem and confidence, and for strengthening family ties and social inclusion.



Strengthening Family Ties

Programmes and events are organised throughout the year to provide the platform for bonding within and between families, enable the beneficiaries to hone social skills and expand their horizon.





Annual Party



Club Rainbow (Singapore)'s iconic event, and typically the largest one for the year, is held annually to provide excellent opportunities for bonding and interaction between our beneficiaries and families, members of Advisory Board and Management Council, volunteers, staff, sponsors and partners, and other stakeholders. The event is also a platform to recognise the academic achievements of our beneficiaries at the Education Awards Presentation Ceremony.

DATE: 19 February 2017

LOCATION: ORTO @ Yishun



ATTENDED BY

168 beneficiaries and 504 family members, and 289 volunteers, Management Council members, staff, partners and other stakeholders



Themed around “Active Family”, the event, which saw the largest turnout of beneficiaries and families in the year, accentuated the importance of staying active and encouraged the culture of being active over passivity in their lifestyle choices. ORTO, Singapore’s first multi recreational park was the location of choice as it could cater to the number of participants while having adequate fun activities to engage our families. Co-organising the event with student leaders and volunteers from Hwa Chong Institute The Artemis Faculty, beneficiaries and families thoroughly enjoyed themselves in the activities such as longkang fishing, trampoline park, paintball shooting and carnival game booths.



Celebrating Heroes



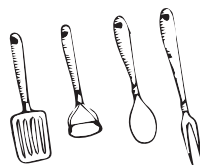
Celebrating Heroes, or more commonly known as Caregivers' Appreciation Day celebrates the caregivers who are extraordinary heroes in their day-to-day care of their child. The event provides the platform to help families and beneficiaries to be comfortable and familiar with others that they have not met, thereby renewing friendships and creating new ones. The parents and caregivers will be able to expand their horizons and learn new skills through specially curated workshops. The Exemplary Caregivers' Award was introduced in 2015 to recognise exemplary commitment and efforts of our caregivers to overcome challenges in the ceaseless care of their children, so that others would know that they are not alone in their journey.

DATE: 26 August 2017

LOCATION: Grand Hyatt Singapore



This year being Club Rainbow (Singapore)'s 25th Anniversary, the event was scaled up to incorporate elements of the anniversary celebration which were representative of such significant milestone for the organisation. One key highlight was the showcase of our BRIDGE programme and Therapy Services. For the first time, beneficiaries who were trained and developed through our BRIDGE Vocational Development programmes assumed the roles of trainee baristas and chefs to provide specialty coffee, local delicacy char kway teow and muffins for event participants. The Exemplary Caregivers' Award forum empowered our exemplary caregivers to share their life challenges and how they overcame adversities, and other caregivers and families to understand that they would not be alone in their journey.

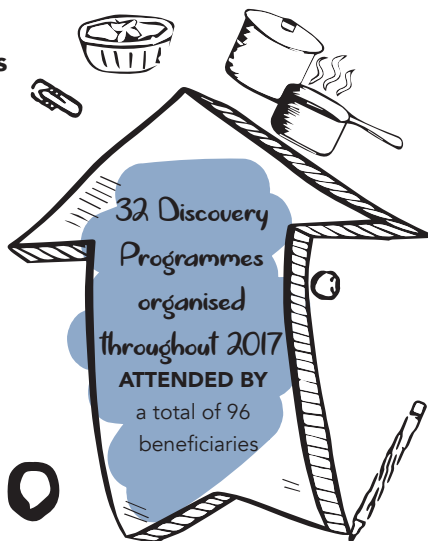


BRIDGE Programme

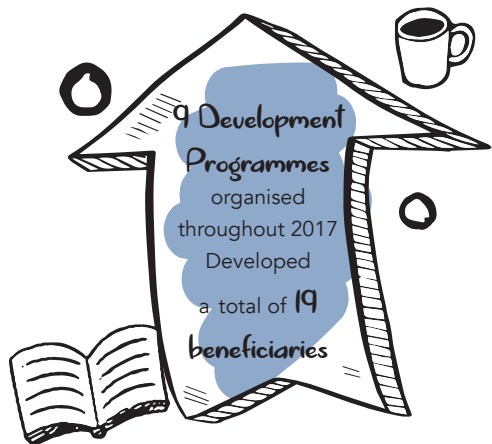
Every child is unique. We believe that all our beneficiaries have limitless potential to excel, given the right exposure, training and opportunities. With this belief, the BRIDGE programme was set up to provide a wide variety of exciting workshops in areas of Community Integration, Independent Living and Vocational Skills Training to develop our beneficiaries and open up limitless possibilities for them towards independent and self-sufficient living.

Vocational Development Programmes

A series of programmes were implemented in various tracks in F&B, merchandise sales training and essential life skills. Introductory classes ranged from cooking and culinary art, baking and coffee barista, financial literacy, public speaking skills, resume writing and interview skills and photojournalism. Our industry immersion programmes also provided opportunities for our beneficiaries and families to visit companies and better understand the operations and work involved to pique their interest in respective industries.



**32 Discovery
Programmes
organised
throughout 2017
ATTENDED BY
a total of 96
beneficiaries**



**9 Development
Programmes
organised
throughout 2017
Developed
a total of 19
beneficiaries**

Selected beneficiaries were subsequently placed in advanced trainings to further hone their skills and given platforms to harvest their learnings. Such platforms include the showcase of cooking, baking, specialty coffee making and event photography skills by our beneficiaries at our signature event, Celebrating Heroes. Beneficiaries also assumed the role of emcees at major events such as Dreamseeds Arts Fest and 25th Anniversary Celebrations Gala Dinner.

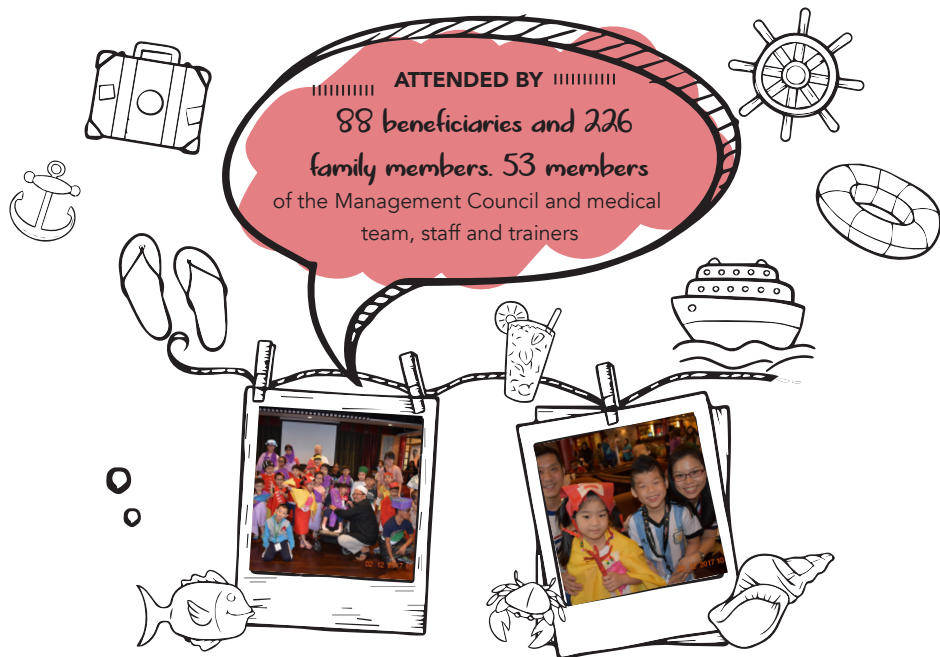


Club Rainbow Family Retreat

Club Rainbow Family Retreat is an annual, iconic event where beneficiaries and families are invited to an overseas trip to promote quality time for bonding as a family in a relaxed environment and social interaction with other families. There are also respite moments provided to relieve parents and caregivers from their relentless duty of caring for their chronically ill child. Enrichment and informative programmes are organised to enhance the know-hows of parents and caregivers while there are separate dedicated activities to impart skills and values to the children.

DATE: 1 to 4 December 2017

LOCATION: Cruise to Penang, Malaysia



Nautica Fantasia, the event title for the family retreat on cruise, saw 80 families who participated in this annual retreat event. Majority of the families would not have had the chance for an overseas trip without the comprehensive financial or medical support that was specially provided for the event. Key aspects of the event which received encouraging feedback from the families include the BRIDGE Graduation Ceremony for beneficiaries who were graduating from Club Rainbow (Singapore), team-bonding and learning workshops, and Meet-the-Council sessions where they were able to share their opinions and challenges with members of the Management Council and staff.

Talent Development

Talent Development Fund is a grant award disbursed to beneficiaries to recognise and nurture their talents, in a diversified genre of performing and visual arts, and as a form of motivation to encourage them to develop that talent. Since its pioneering inception in 2005, the grant has been awarded to more than 200 beneficiaries whose talents are in the key tracks of visual and performing arts, and sports. In 2015, the concept of Dreamseeds was mooted to develop a series of arts development programmes which will converge at a key showcase event to encourage beneficiaries to seed their aspirations and grow their dreams with partners, industry professionals and local arts communities.

Arts Development Programmes



A series of programmes were implemented in various genres of performing and visual arts ranging from cajon, hip hop dance, iPad songwriting, Singing, ukulele, digital art, canvas painting, clay art and photography. This seeks to address the need for artistic diversity, provide equitable opportunities for our beneficiaries to discover their interests and enjoy enriching creative experiences.



Programmes in selected genres were organised in collaboration with like-minded community partners to progressively deepen the learning of identified beneficiaries who have displayed adequate passion and commitment towards the particular artistic field.





15 Mentorship Programmes
organised throughout 2017
Mentored a total of 18 beneficiaries

Paired with relevant industry professionals, selected beneficiaries underwent a series of dedicated sessions both individual and small-group formats to create greater impact in advanced stages of their development path. Other than improving their technical skills, intentional efforts were taken to develop an inclusive community where equitable opportunities were given to beneficiaries for two-way experience and knowledge sharing to gain industry insights and build rapport within the industry.



8 Empowerment Platforms
were organised throughout 2017
Empowered a total of 74 beneficiaries



Platforms were sought to harvest the skills our beneficiaries have learned through the different programmes. By performing and showcasing their artistic talents and artworks to a wider public audience, beneficiaries were able to develop self-esteem and confidence which was in line with the psychosocial aims for the organisation. Other than our signature event, Dreamseeds Arts Fest and pre-shows leading up to the festival, Club Rainbow (Singapore) also leveraged on events by community partners as part of continual efforts to build an inclusive community.



Talent Development Fund
Awarded to a total of
60 beneficiaries



The year 2017 saw the largest number of beneficiaries being awarded the Talent Development Fund. This was a positive outcome of the proactive approach to better identify deserving beneficiaries from various programmes and showcase platforms put in place throughout the progressive development route.





Dreamseeds Arts Fest



Championing the freedom of creation and expression, Dreamseeds Arts Fest celebrated the creative pursuits and explorations of our beneficiaries. The second edition of the event featured exciting highlights, including an Arts Exhibition, Performing Arts Concert, fringe creative workshops, film screening and an inaugural Mini Arts Market. For the first time, selected beneficiaries formed bands with renowned local musicians to perform in front of a much larger audience. The Mini Arts Market provided the platform for the first cohort of beneficiaries to sell merchandise inspired by their artworks and generated their very first supplementary income. This is done in tandem with our BRIDGE Vocational Development programmes to develop our beneficiaries towards independent and self-sufficient living. The festival's launch event on 18 November 2017 was graced by Mdm Halimah Yacob, President of the Republic of Singapore.

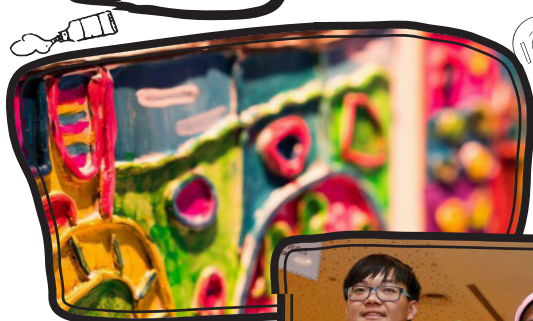


DATE: 18 to 25 November 2017

LOCATION: *SCAPE Orchard



Attended by 115 beneficiaries and 778 other participants, including family members and members of public, 103 Management Council members, staff, volunteers and other stakeholders



Community Engagement



As an independent charity, Club Rainbow (Singapore) builds social capital by leveraging on a cohesive network of corporates, learning institutions, community partners, voluntary groups and individuals.

By working closely with our sponsors and partners, this allows for continuity and sustainability in the provision and expansion of services and programmes for our beneficiaries and families.







Camp Rainbow

With its history dating back to 1991, Camp Rainbow is a medically-supervised, residential camp which allows beneficiaries to stay in-camp away from their parents and caregivers. One unique feature is the individual attention paid to needs of each beneficiary by an adult befriender throughout the duration of the three-day, two-night camp. This enables the children to develop a sense of independence, confidence and foster lasting friendships. Camp Rainbow is solely organised by volunteers, with many of them being current or former beneficiaries, and work on a succession model that allows development of beneficiaries for leadership positions.

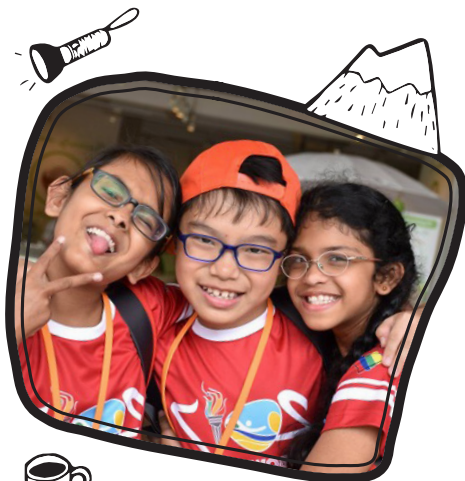
DATE: 11 to 13 March 2017

LOCATION: Cherryloft Resorts @ Pasir Ris




Attended by 81 beneficiaries and 220 volunteers,
including 58 main organising and youth committee
members, 85 bendifenders and group leaders, 17
medical personnel and 60 corporate volunteers


For the first time, the iconic event was held in March instead of June and at a new venue, which recorded its highest number of 81 beneficiaries with the support of 220 volunteers. "Rainbow Olympics" was the theme for 2017 to create an immersive sports experience and inculcate the Olympic Spirit in everyone. Strong friendship and solidarity, the cornerstones of the Olympic Spirit, were forged as our beneficiaries and volunteers participated in interactive and educational activities and overcame challenges throughout the three-day, two-night camp.



Ride For Rainbows

Ride for Rainbows is a flagship fundraising event organised by Club Rainbow (Singapore) since 2012. This event aims to raise public awareness as well as funds to support children who suffer from a range of major chronic and potentially life-threatening illnesses and their families.

The event challenges the resilience and tenacity of riders to complete a grueling ride around the island, which exemplifies the same qualities we hope to inculcate in our Rainbow children in their journey towards an enriching life.

DATE: 29 April 2017

LOCATION: ORTO Singapore



With close to one-fold increase in participation, we saw a total of 707 riders across all categories and raised a total donation sum of S\$648,054.

In commemoration of Club Rainbow (Singapore)'s 25th Anniversary, Ride for Rainbows returned this year with new routes, a new 25km category and a new flag off venue at ORTO Singapore. On this 6th edition, we had the honor of having Mr. Tan Chuan-Jin, the first Minister to cycle and raise funds for our beneficiaries. He embarked on the 100km route and secured his place as the Master Fundraiser with a donation amount of S\$46,126. The event highlight this year also included the participation of our 11 year old beneficiary – Jeremiah Liaw, who hand cycled alongside with his family to raise funds for his peers in Club Rainbow (Singapore).





Gala Dinner 2017



Held every five years, the charity gala dinner is one of our key fundraising events to commemorate an anniversary milestone with an objective to raise funds to support our mission and sustain our work and daily operations. By providing compassionate relevant services, we aim to give all our beneficiaries a better quality of life and hope for the future.

DATE: 15th October 2017

LOCATION: Hotel Fort Canning



Themed as "Shine in Your Own Way", we hope to embrace, enable and empower our children despite of any differences, so that they can shine in their own way.

Graced by Associate Professor Muhammad Faishal Ibrahim, it was an evening of celebration and fun with our esteemed corporates, donors, beneficiaries and families as we marked Club Rainbow (Singapore)'s 25th Anniversary. An array of musical and dance performances was specially prepared by our beneficiaries, as we celebrated and embraced the uniqueness of every rainbow child. Our guests were invited to witness an exclusive launch of our 25th Anniversary Coffee Table Book, a special edition which featured 20 inspiring stories of our beneficiaries.





Kris Kringle



Kris Kringle is a holiday event that instils the spirit of giving and sharing for our beneficiaries. The event, solely supported by corporates, allows our beneficiaries to give back to others in return for the support and blessings that they have been continuously receiving from people who love and care for them. This also creates the opportunities for them to make new friends and understand the importance of companionship. The bond that is developed will help them add balance to their emotional well-being, as they will not need to walk through their life journey alone.

DATE: 1 to 16 December 2017

LOCATION: Shopping malls at various locations



Attended by 276 beneficiaries in respective programmes organised in collaboration with 9 corporate and institutional partners

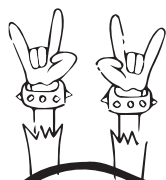


Kris Kringle events were held over two weeks to better engage and benefit significantly more beneficiaries in a more targeted approach across all age bands. One key highlight was the home-delivered surprise gifts which brought smiles to home-bound and bed-bound beneficiaries, who otherwise would not have the chance to leave their homes for these events due to their medical conditions.

Ad-Hoc Programmes

There are numerous programmes held throughout the year to optimise outreach and engagement of beneficiaries and families. These programmes, ranging from visits and excursions to learning workshops, will not be possible without the immense support from corporate sponsors and community partners.





Financial Highlights

Other expenditures are only 9% of overall operating expenditures

Our investment income grew by 25% due to better performance of our investment portfolio



100% of donations in FY2017 can only cover 64% (87% in FY2016) of our charitable activities (including cost of generating funds), with the balance 21% (13% in FY2016) covered by government grant and investment income; and remaining 15% (Nil in FY2016) coming from our reserves



Our unrestricted fund reserves in FY2017 dropped by close to 7% as a result of the operating deficit

Deficit in FY2017 increased by more than 14 times over the deficit in FY2016

Statement of Financial Position

As at 31 December 2017

	Notes	2017 \$	2016 \$
Assets			
Current assets			
Cash and bank balances		4,242,718	5,381,605
Other receivables		27,210	35,448
Total current assets		4,269,928	5,417,053
Non-current assets			
Plant and equipment		447,836	567,369
Investment securities – available - for - sale		10,699,823	10,236,712
Total non-current assets		11,147,659	10,804,081
Total assets		15,417,587	16,221,134
Liabilities, fund and reserve			
Liabilities			
Current liabilities			
Other payables		520,813	158,635
Deferred revenue		92,980	308,319
Total current liabilities		613,793	466,954
Total liabilities		613,793	466,954
Fund and reserve			
Unrestricted fund		14,695,171	15,793,900
Fair value adjustment reserve		108,623	(39,720)
Total fund and reserve		14,803,794	15,754,180
Total liabilities, fund and reserve		15,417,587	16,221,134

Club Rainbow (Singapore) is a registered society in Singapore under the Societies Act, Chapter 311 on 27 November 1992 and is an approved charity under the Charities Act, Chapter 37 since 22 December 1992. It has been accorded the status of an Institution of a Public Character from 29 September 2017 to 28 September 2020.

The principal activities of the Society are to provide emotional, informational, financial, educational and psycho-social support to children suffering from life threatening illnesses and their families.

RESERVE POLICY

The reserve of Club Rainbow (Singapore) provides financial stability and the means for the development of Society's activity. Club Rainbow (Singapore) intends to maintain the reserve at a level, which is equivalent to \$17,205,457 (2016: \$18,242,015) (approximately 3 years of projected expenditure including depreciation).

The Management Council will review annually the amount of fund that is required to ensure that they are adequate to fulfill the Society's continuing obligations.

The Society is not subject to externally imposed reserve requirement.

Statement Of Financial Activities

For the financial year ended 31 December 2017

UNRESTRICTED FUND				
	2017		2016	
	\$	%	\$	%
Income				
Income from generated funds				
Voluntary income	2,006,003	55	2,248,808	61
Activities for generating funds	766,193	21	739,590	20
Investment income	379,660	10	302,482	8
Income from charitable activities				
Grant	502,227	14	407,631	11
Other income	2,553	-	1,438	-
Total Income	3,656,636	100	3,699,949	100
Expenditures				
Cost of generating funds	177,229	4	141,691	4
Charitable activities	4,129,465	87	3,277,137	87
Governance costs	12,395	-	8,779	-
Other expenditures	436,276	9	348,005	9
Total Expenditures	4,755,365	100	3,775,612	100
Net Loss For The Year	(1,098,729)		(75,663)	

The number of employees (including key management personnel) whose remuneration amount to over \$100,000 in the year is as follows:

	2017	2016
Number of employees in bands:		
\$100,001 to \$150,000	2	1

- The Executive Director has the authority and responsibility for planning, directing and controlling the operations of the Society directly or indirectly.
- The Management Council is the final authority and is overall responsible for policy making and determination of all activities. Management Council members are volunteers and received no monetary remuneration for their contribution.

Auditor : Helmi Talib & Co



Registered Address

Orchard Post Office Box 447 Singapore 912315

Office Address

Block 538 Upper Cross Street #05-263/269
Singapore 050538

UEN

S92SS0137H

www.clubrainbow.org

Club Rainbow (Singapore)

